

# MY COMMUNITY, OUR EARTH

## MIAMI

## Crop Varieties of the Fruit and Spice Park

Project Director: Mr. Diony Martinez  
Team Leader: Vanessa McCloskey

**Problem Statement:** Which types of edible crops are grown in the rural farmsteads of Miami-Dade County?

The goal of this project was to become aware of local farming practices so that our community can exchange information on the topics of agriculture with other students around the world. Once the investigative process began, researchers were able to see several different plants and the methods used to grow them; in turn gaining insight as to where the food on our table really comes from. It is important to note that the area researched was the Fruit and Spice Agricultural Site in Homestead, Florida. "The Park's tropical climate, found nowhere else in the continental U.S., hosts over 500 varieties of fruits, vegetables, spices, herbs, and nuts, and other commercially important plant specimens from around the world" (Friends of the Fruit, 2009).

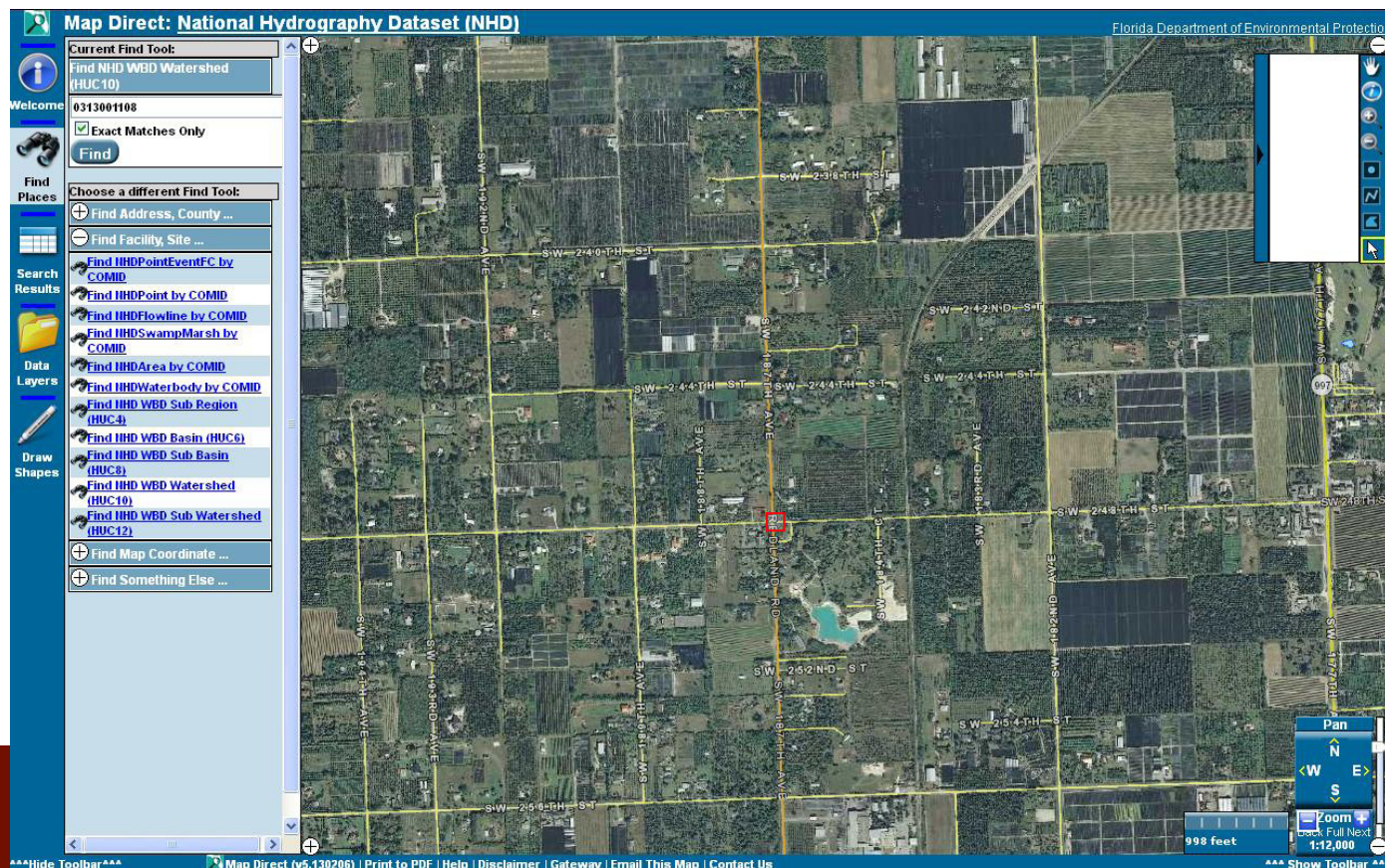
Here is a map of the Fruit and Spice Park, the location where our research was conducted. It identifies the locations of several of the plant varieties grown there and shows a photograph of each.



A major concern was the creation of a detailed map of the park where researchers took the role of cartographers and created a legend, appropriate labels, and recorded pictures of the different fruits, vegetables, and plants grown. To carry out this task, a simple map of the grounds was utilized and subsequently supplemented with information gathered during the trip. This information is vital to understanding the food security of our area, as most southern Miamians benefit from the food that is locally grown or made.

## Conclusion

By learning what is available in our neighborhood, we can make emergency plans in case we ever have to support ourselves. In order to be secure in our resources, we need to know what we are lacking in so that the problem can be addressed. The map itself is a visual representation of what is readily available to us here in South Florida and ties together the main focus of this project- agriculture in Miami.

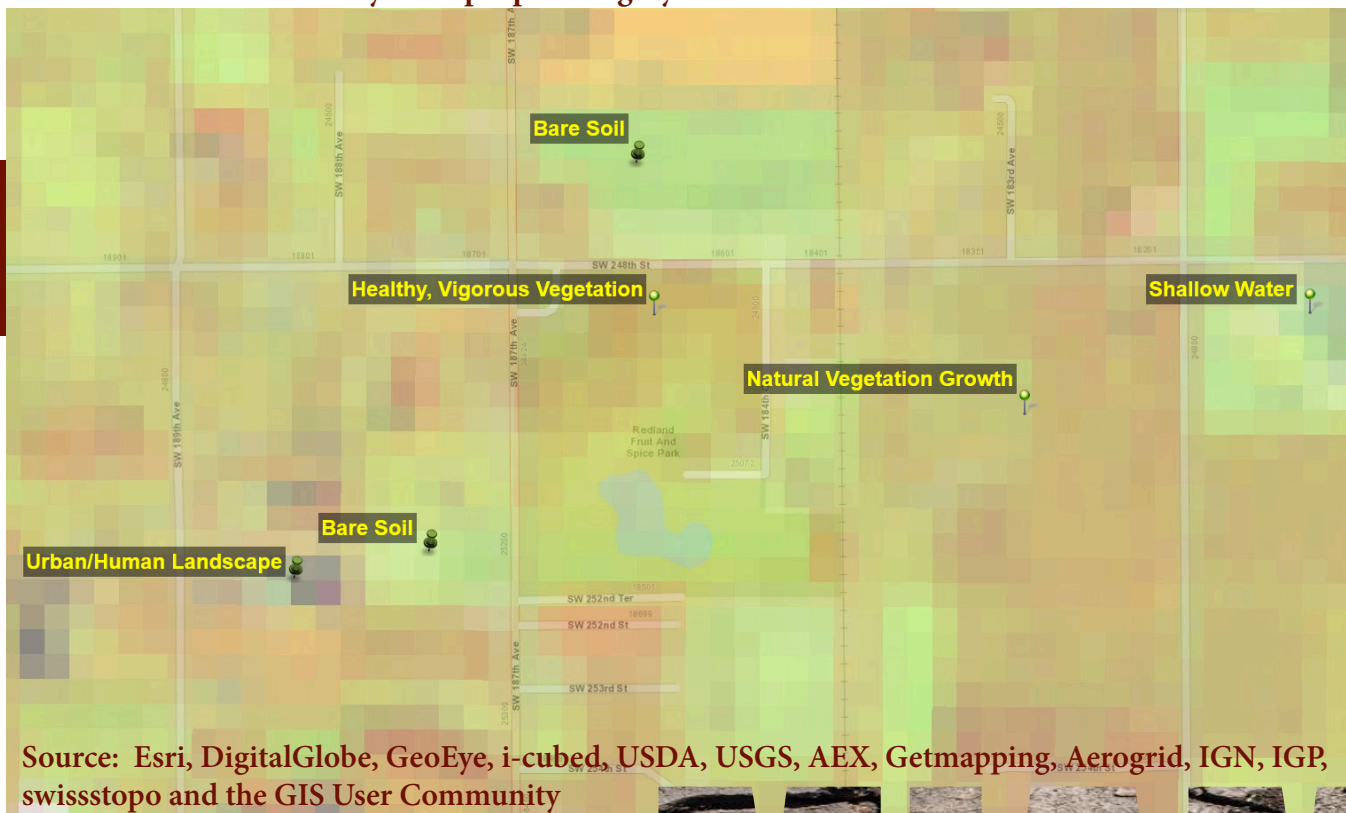


Satellite imagery of the Fruit and Spice Park with vegetation highlights.

## Resources

Friends of the tropical fruit & vegetable society of the redland. (2009).  
Retrieved from <http://www.fruitandspicepark.org>

**Healthy Vegetation**-vigorous vegetation appears in shades of orange trending towards reddish, with less vigorous and natural vegetation darker oranges and browns. Bare soils appear as greens and browns. Urban features vary from purple and grey to white.



Source: Esri, DigitalGlobe, GeoEye, i-cubed, USDA, USGS, AEX, Getmapping, Aerogrid, IGN, IGP, swisstopo and the GIS User Community

